



Transform Your Law Firm's Data into Actionable Insights

The Ultimate Data Solution for Law Firms

In the legal sector, safeguarding client data and adhering to compliance standards is paramount. With the power of analytics, law firms can take swift, data driven action to maintain data security and regulatory compliance.



What is CAM Analyze?

- CAM Analyze, is an integral part of Litera's CAM platform, providing law firms with easy-to-use data management, analytics, and visualization capabilities. It's a strategic tool tailored to meet the legal industry's demand for thorough data analysis and heightened confidentiality.
- With CAM Analyze, you can effortlessly spot out of compliance data and quickly ensure adherence to security and compliance policies. A few simple clicks allow you to review and adjust the security settings of your workspaces, ensuring total alignment with firm policies.



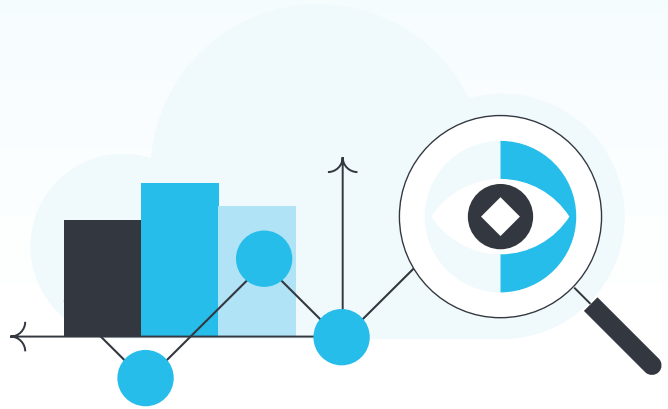
What This Means for Your Firm

- Easily discover security vulnerabilities, such as public workspaces that should be private. Then, promptly update these settings in bulk to enforce the necessary security protocols—no technical expertise required.
- Firms can also stay on top of compliance effortlessly.
- If your data residency needs to align with specific regulations, such as keeping certain workspaces within the UK or EU, CAM Analyze can quickly generate reports that offer a clear picture of where your data resides. CAM Analyze then makes it easy to take bulk action to reassign data residency and meet compliance standards.



Why Every Law Firm Needs CAM Analyze:

- In the world of legal data management, having clear-cut control and insight over sensitive information is key.
- With CAM Analyze, it's simple: analytics help keep your client data safe and stay ahead of the ever-evolving compliance curve.



Here's What Your Firm Gets:

Intuitive Interface: No SQL Skills Needed

CAM Analytics boasts an intuitive user interface that simplifies complex data visualization and reporting. Generate detailed reports without the need for SQL expertise, enabling non-technical stakeholders to create their own reports effortlessly.

Faster Results

With significant improvements in speed, CAM Analytics ensures quick report generation. Access critical insights faster to make timely, data-driven decisions.

Take Action on Results

Our platform not only provides comprehensive data reports but also enables you to take bulk actions directly from the analytics tab. Update security, change data residencies, report inappropriate behavior, and more—all from one place.

Reusable Reports

Save time with our reusable report feature. Once a report is created, it can be saved and reused, ensuring consistent and efficient data analysis.



Real-World Applications

Effortless Data Synchronization

Synchronize key metadata from various collaboration systems seamlessly. CAM's Metadata Sync feature offers smooth data integration, crucial for firms transitioning to cloud-based systems without losing valuable insights.

Advanced Reporting and Bulk Updates

Audit user behaviors, identify areas for maintaining data integrity, and monitor sensitive data with ease. For instance, address metadata and security modifications that may be required after a move to the cloud. Or checking document activity ahead of a senior associate's departure.

Dashboard Customization

Tailor dashboards to monitor user activity, track regional matters, and oversee data security. This visual insight helps reduce risk and promotes efficient data management.

Efficiency and Organization

Visualize workload distribution across clients, departments, and regions. Use CAM's reporting features to manage file structures, streamline data storage, and eliminate unnecessary clutter.

The screenshot shows the 'Analytics' section of the LITERA CAM interface. It features a search bar at the top and a navigation menu with options like 'Directory', 'Jobs', 'Users & Groups', 'Approvals', 'Administration', 'Analytics', 'Documents', 'Workspace', and 'Controls Center'. The main content area is titled 'Analytics' and includes a '+ New Report' button. Below this is a table of 'Existing Reports' with columns for Name, Description, Last Modified Date, Last Modified By, and Actions.

Name	Description	Last Modified Date	Last Modified By	Actions
name	Description			x ↺
ES- Document count for matter between date range	Count of documents created within a date range	06/25/2024	Tina Harkins	↺ 🗑️ ▶️
ES- Total Document Count per Library and System	Count of documents per library and system	06/25/2024	Tina Harkins	↺ 🗑️ ▶️
ES- CheckedOut Documents older than 6 months	Find documents checked out beyond 6 months	06/25/2024	Tina Harkins	↺ 🗑️ ▶️
ES- Document Security Access Report by User JSIMMONS	Find documents accessed by user	06/25/2024	Tina Harkins	↺ 🗑️ ▶️
YG - demo - docs filtered on activities	Find documents filtered by activity	06/25/2024	Tina Harkins	↺ 🗑️ ▶️
YG - demo1 - Doc Where Used	Find documents where used	06/25/2024	Tina Harkins	↺ 🗑️ ▶️
YG - demo3 - downloads	Demo report for downloads	06/25/2024	Tina Harkins	↺ 🗑️ ▶️
YG - demo 0 - docs for client and matter	Demo report for client/matter	06/25/2024	Tina Harkins	↺ 🗑️ ▶️
Documents by Client Matter	Search for documents by client, matter & author	06/25/2024	Tina Harkins	↺ 🗑️ ▶️
YG - demo2 - User activity report	User activity report	06/17/2024	Yann Goullou	↺ 🗑️ ▶️
ES- Melle matter	Docs imported from PowerDesktop	06/07/2024	Eric Schulek	↺ 🗑️ ▶️
ES- Workspaces filtered by Practice	Returns workspaces for a given practice group (e.g. Corporate)	06/04/2024	Eric Schulek	↺ 🗑️ ▶️



LITERA
CAM

Why CAM Analytics Stands Out

Find the Insights Hidden in Your Legal Data

CAM Analytics delivers unparalleled value by addressing critical data management and analysis pain points. From enhancing productivity to ensuring data integrity & security, our platform is designed to meet the unique needs of law firms.

Invest in CAM Analytics to transform how your firm manages and leverages data. Enhance efficiency, security, and productivity with a solution tailored to the needs of modern law firms.

The screenshot displays the 'Analytics' section of the LITERA CAM platform. It features a navigation menu at the top with options like 'Directory', 'Jobs', 'Users & Groups', 'Approvals', 'Administration', 'Analytics', 'Documents', 'Workspace', and 'Controls Center'. The main area is titled 'Documents by Client Matter' and shows a 'Report Results' table with 20477 results. The table has columns for 'Number', 'name', 'client_code', 'matter_code', 'class_code', 'document_type', 'author', 'operator', 'created_date', and 'edit'. The data rows show various document entries, including HTML and JSON files, with authors like 'CAMADMIN1' and '103'. A sidebar on the left allows filtering by 'Client', 'Matter', and 'Author'. At the bottom, there are pagination controls showing '4 of 100' and 'Showing 100 Results/Page'.

Number	name	client_code	matter_code	class_code	document_type	author	operator	created_date	edit
37080	CAM_3665964800000_conversatio...	44508	20001	DOC	HTML	CAMADMIN1	CAMADMIN1	2022-10-17 06:15:43	202 06:
20120	Joseph Simmons can you look at	44508	20001	DOC	JSON	CAMADMIN1	CAMADMIN1	2022-10-17 06:15:25	202 06:
33369	Joseph Simmons can you look at	44508	20001	DOC	JSON	CAMADMIN1	103	2022-10-17 06:15:25	202 06:
37082	CAM_3665964800000_conversatio...	44508	20001	DOC	HTML	CAMADMIN1	CAMADMIN1	2022-10-17 06:15:43	202 06:
41644	Joseph Simmons can you look at	44508	20001	DOC	JSON	CAMADMIN1	CAMADMIN1	2022-10-17 06:15:25	202 06:
41646	Joseph Simmons can you look at	44508	20001	DOC	JSON	CAMADMIN1	CAMADMIN1	2022-10-17 06:15:25	202 06:
41645	CAM_3665964800000_conversatio...	44508	20001	DOC	HTML	CAMADMIN1	CAMADMIN1	2022-10-17 06:15:43	202 06:
45371	Joseph Simmons can you look at	44508	20001	DOC	JSON	CAMADMIN1	CAMADMIN1	2022-10-17 06:15:25	202 06:
45372	Joseph Simmons can you look at	44508	20001	DOC	JSON	CAMADMIN1	CAMADMIN1	2022-10-17 06:15:25	202 06:
37081	Joseph Simmons can you look at	44508	20001	DOC	JSON	CAMADMIN1	CAMADMIN1	2022-10-17 06:15:25	202 06:
49111	Joseph Simmons can you look at	44508	20001	DOC	JSON	CAMADMIN1	CAMADMIN1	2022-10-17 06:15:25	202 06:
49110	Joseph Simmons can you look at	44508	20001	DOC	JSON	CAMADMIN1	CAMADMIN1	2022-10-17 06:15:25	202 06:
49113	CAM_3665964800000_conversatio...	44508	20001	DOC	HTML	CAMADMIN1	CAMADMIN1	2022-10-17 06:15:43	202 06:
49112	CAM_3665964800000_conversatio...	44508	20001	DOC	HTML	CAMADMIN1	CAMADMIN1	2022-10-17 06:15:43	202 06:
41647	CAM_3665964800000_conversatio...	44508	20001	DOC	HTML	CAMADMIN1	CAMADMIN1	2022-10-17 06:15:43	202 06:
45373	CAM_3665964800000_conversatio...	44508	20001	DOC	HTML	CAMADMIN1	CAMADMIN1	2022-10-17 06:15:43	202 06:
45374	CAM_3665964800000_conversatio...	44508	20001	DOC	HTML	CAMADMIN1	CAMADMIN1	2022-10-17 06:15:43	202 06:
52945	Joseph Simmons can you look at	44508	20001	DOC	JSON	CAMADMIN1	CAMADMIN1	2022-10-17 06:15:25	202 06:

For a closer look, visit www.litera.com or [request a demo](#).

